

# VitaLab

FAST

SENSITIVE

RELIABLE

## Progesterone Test Kit (Dry Fluorescence Immunoassay)

CE IVD



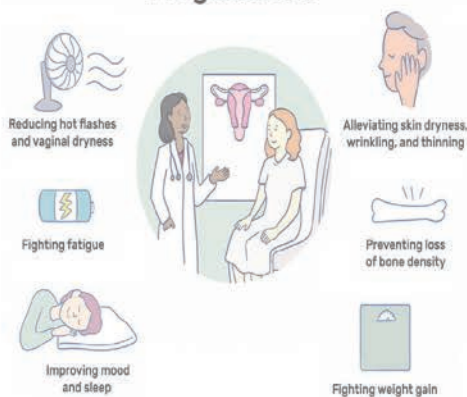
### What is Progesterone?

**Progesterone (P4)** is an endogenous steroid and progestogen sex hormone involved in the menstrual cycle, pregnancy, and embryogenesis of humans and other species. It belongs to a group of steroid hormones called the progestogens and is the major progestogen in the body.

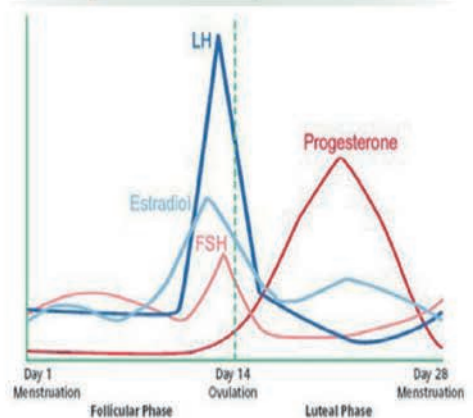
Progesterone has a variety of important functions

in the body. It is also a crucial metabolic intermediate in the production of other endogenous steroids, including the sex hormones and the corticosteroids, and plays an important role in brain function as a neurosteroid.

### Health Benefits of Progesterone



### “ Progesterone, LH, FSH, and estradiol levels over a single menstrual cycle in females ”



### Signs and symptoms of low progesterone

#### Symptoms:

- Headaches
- Tender breasts
- Body aches
- Bloating
- Depression
- Anxiety
- Irritability
- Insomnia

#### Signs:

- Transvaginal ultrasound: abnormal results
- Pelvic exam: cysts, scars, masses
- Thyroid panel: irregular results
- Progesterone tests: low levels



### Steps of Operation

